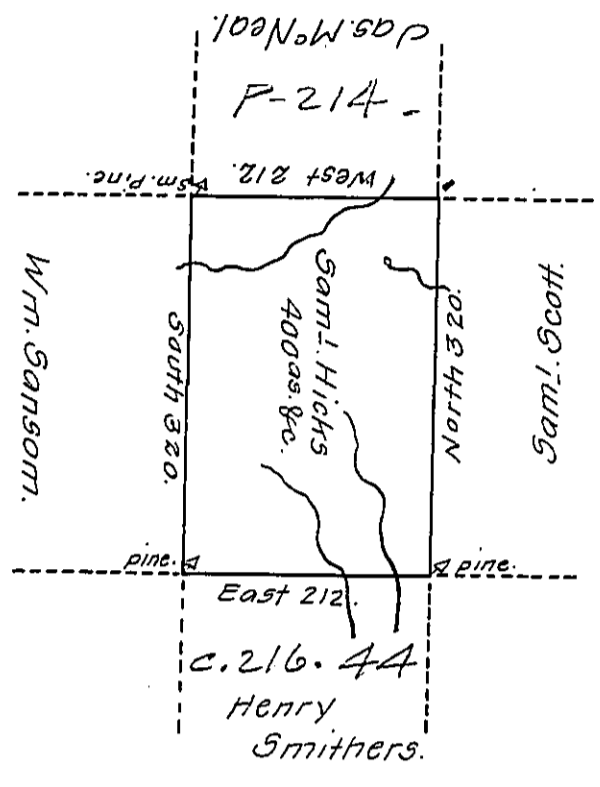


Foster -
Luzerne

C.216. 41.



C.216. 29

(obl) aft of a tract of land called ——— situate Joining Land (obl)
 (obl) Samuel Scott and others in the County of Northumd containing four
 hun(obl) acres & Allowance surveyed for Saml. Hicks the 23^d day of Sep^r 1793
 by Vir(obl) of a warrant dated the 2^d day of August, 1793.

To Daniel Brodhead, Esqr, }
 Surv^r. Genl. }

by
 Wm. Gray, D.S.

IN TESTIMONY that the above is a copy of the original remaining on file in
 the Department of Internal Affairs of Pennsylvania, made
 conformably to an Act of Assembly approved the 16th day of
 February, 1833, I have hereunto set my Hand and caused
 the Seal of said Department to be affixed at Harrisburg,
 this twenty fourth day of April, 1912.

Henry Howell
 Secretary of Internal Affairs.